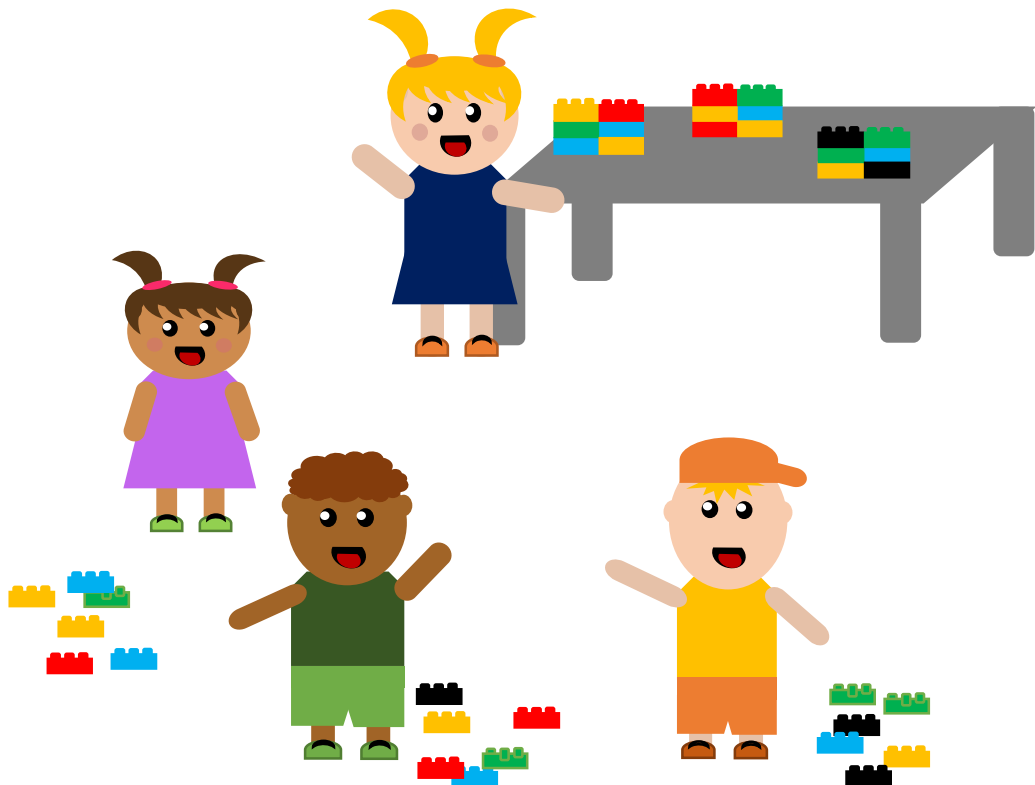


# COPY THE LEGO TOWER



# COPY THE LEGO TOWER

## Objective

In this game, the children's working memory is challenged, as they must remember specific patterns in the Lego tower.

## Equipment

Lego or Duplo bricks

## Instructions

1. The adult builds small Lego towers with, for example, six bricks tall with a colour pattern (green, yellow, red, blue, red, yellow). Build the same number of towers as there are children playing.
2. Place the towers behind a table and mark a track for each child. Place the Lego bricks where the child starts.
3. Each child runs up their track to the table and studies the pattern on their tower.
4. Thereafter, the child runs back to the starting point and builds a tower with the same pattern as the tower behind the table. If the child does not remember all the bricks in the first round, he/she runs up to the table to study the tower again.
5. When all the children have finished building, they compare the tower they have built with the tower standing behind the table. Are the towers the same?

## Tips

- You can vary the difficulty level of the game by building smaller or higher towers or simple and more difficult patterns to adapt the game to the children's ability.

## Variation

- The game can be varied by getting the children to move around in different ways, for example, by jumping, crawling or hopping to the table.
- Another version of the game involves the adult making two small, and almost identical, constructions (e.g. with six bricks), where one brick is different or a brick is in a different place. Place the constructions at each end of the play area. The child now runs between the constructions to find the difference. Will the child find the different brick or which brick is in a different place? For progression in the game, several bricks can be added and more bricks can be placed differently.
- The game can be played with other equipment. For instance, place bean bags in a pattern at one end of the play area (slightly hidden). The children shall place the bean bags in the same pattern at the other side of the play area.