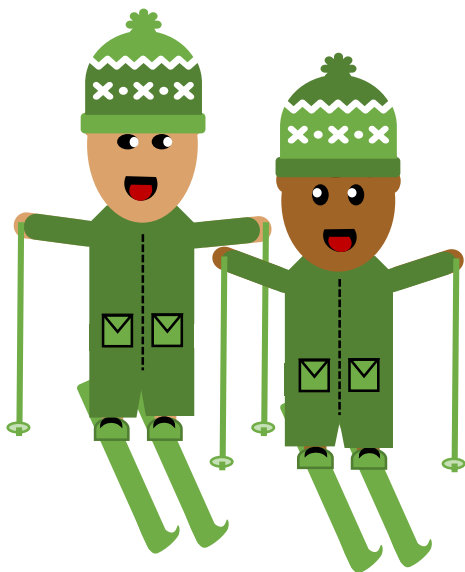


MOTOR CHALLENGING PHYSICAL ACTIVITY



STIFF WITCH IN PAIRS ON SKIS



STIFF WITCH IN PAIRS ON SKIS

Objective

In this activity, the children practise basic skiing skills, whilst at the same time it's exciting and fun. The game also requires the children to work in pairs.

Equipment

Skis (without poles)

Instructions

1. Mark out a play area.
2. Divide the children into pairs. Playing Stiff Witch in pairs reduces the pace of the game.
3. All the pairs must hold hands, one pair is the witch and shall try to tag the others.
4. Once a pair has been tagged, they must line up and form a gateway with their arms. The pair is saved when another pair passes through the gateway.
5. Change the tagging pair after a short period of time.

Variation

- For variation, Stiff Witch could be played in the usual way (individually), when the children become safe by creeping between the legs of those who are tagged.