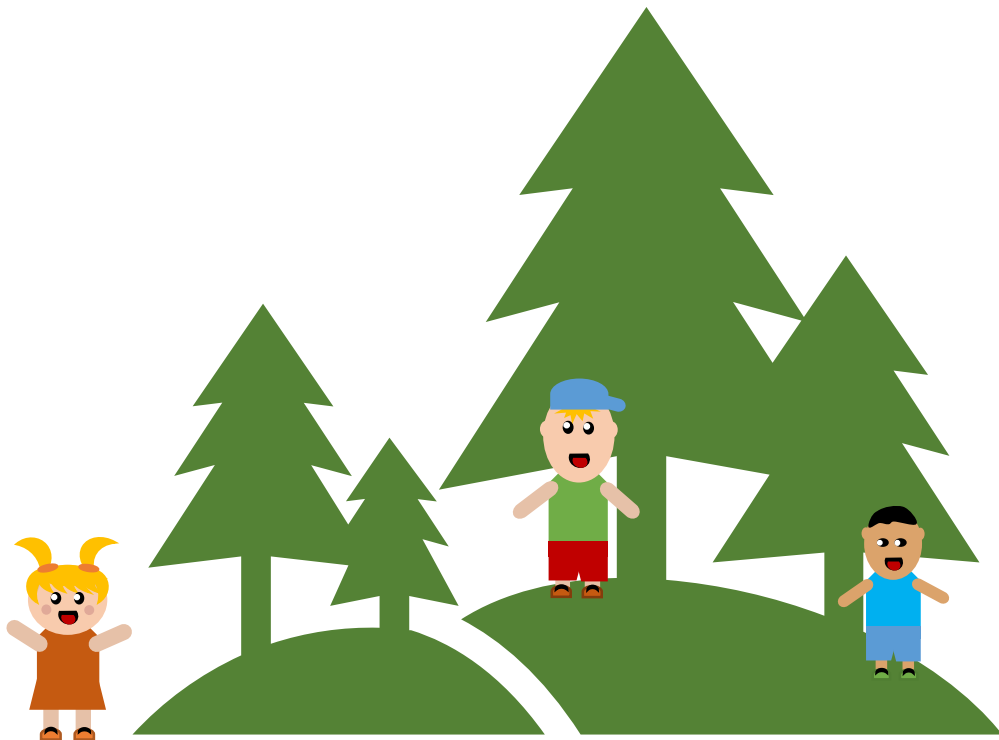




TREE TAG



TREE TAG

Objective

The game is a variant of tag in which the children increase the intensity when they race to reach an available tree.

Equipment

Forest/trees

Instructions

1. The children stand next to their own tree. These trees are form part of the game (can be marked if there are many other trees in close proximity).
2. One child, who is not standing near a tree, stands in the middle of the area.
3. The child standing in the middle (or adult) shouts: "Change trees!"
4. Now everyone tries to find a new tree to stand next to. The child in the middle shall also find a tree.
5. The child, who does not find a tree, must now stand in the middle and try to find a tree in the next round.

Variation

- As a variation, the children can move in different ways, preferably with gross motor movements, such as jumping, hopping or galloping to maintain the high intensity.